

Century Solids

ANDOVER FABRICS

a
100
years



Century Squares Quilt designed by: **Kim Schaefer** • Quilt Size: **52" x 72"**

Skill Level: **Beginner / Intermediate** • andoverfabrics.com

andover

•
•
• makower.uk
•

Free Pattern Download Available

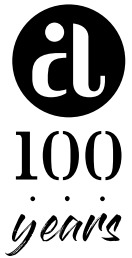
1384 Broadway New York, NY 10018
Tel. (800) 223-5678 • andoverfabrics.com

3/30/20

Century Squares Quilt

Introducing Andover Fabrics new collection: **CENTURY SOLIDS** by Andover Fabrics

Quilt designed by Kim Schaefer



Quilt finishes 52" x 72"

29 Black Blocks: 4" x 4"

29 Graphite Blocks: 4" x 4"

176 White Blocks: 4" x 4"

What's black and white and colorful all over? This contemporary throw-size quilt is! And what a snap to make, too. The multiple bright prints are applied to each black or white square with machine stitching. What could be easier?

Fabric Requirements

| | | Yardage |
|----------------------------|---|----------------|
| 2 Dark | blocks | 5/8 yard each |
| | Graphite, Black | |
| 5 Light | blocks | 5/8 yard each |
| | Almond, Champagne, Cream, Ivory, Oyster | |
| 73 solids | blocks | 5" square each |
| | Aquarium, Aubergine, Bahama, BarnRose, Bluebell, Bordeaux, Brass, Bubble, Butter, BatternutSquash, Caribbean, Carrot, Chocolate, Cloud, CoralSunset, Dawn, Denim, Earth, Faded, Flax, Ginger, GirlyGirl, Goldenrod, Guacamole, GuavaPunch, Gunmetal, Hunter, Icing, Isle, Jade, Jalapeno, Jam, Lagoon, Leaf, Lilac, Mango, Margarita, Mulberry, Navy, Orchid, Papaya, Paprika, Passion, Peacock, Pear, Periwinkle, Pickle, PinkLemonade, Pistachio, Pool, Plum, PressedFlower, Raspberry, Red, Sage, Sailing, Saffron, Sapphire, Sky, Slipper, Smoke, Spice, Storm, Strawberry, Sunshine, Sulfur, Teal, Terracotta, Turquoise, Uniform, Water, Wine, Wisteria | |
| Black (binding) | | 1/2 yard |
| Champagne (backing) | | 3 1/2 yards |

Cutting Directions

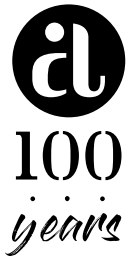
Note: Read assembly directions before cutting patches. All measurements are cut sizes and include 1/4" seam allowances. WOF designates the width of fabric from selvedge to selvedge (approximately 42" wide).

- 2 Dark** **From each:**
Cut 29 squares 4 1/2" x 4 1/2"
- 5 Light** **From each:**
Cut 35-36 squares 4 1/2" x 4 1/2" (176 total)
- 73 Bright** **From each:**
Cut 3-4 squares 2" x 2" (234 total)
OR cut a 5" square from each
(Read Step 1 before cutting.)
- Binding** Cut (7) strips 2 1/2" x WOF for binding
- Backing** Cut (2) panels 40" x 60", pieced to fit quilt top with overlap on all sides

Making the Quilt

1. The bright 2" squares are cut with a zigzag edge. If you prefer to fuse the bright squares to the background dark and light squares, press a lightweight fusible web to the wrong side of a 5" square of bright fabric. Cut 3-4 squares 2" x 2" from the bright 5" square. If using pinking shears, we suggest that you first cut the 2" squares with a regular rotary cutter, and then use pinking shears to cut the edges of each square. Or, use a specialty pinking or scallop rotary blade to cut the 2" squares needed from each bright solid. Repeat these steps with all the bright fabrics. Cut a total of 234 little squares.
2. Position a prepared 2" square in the center of a light 4 1/2" square. Fuse in place if you used the fusible web in Step 1. If not, pin the 2" square on a 4 1/2" square. Use a straight machine stitch to stitch the little square to the larger square, stitching just inside the pinked edge. Use contrasting, matching, or invisible thread, as you wish.

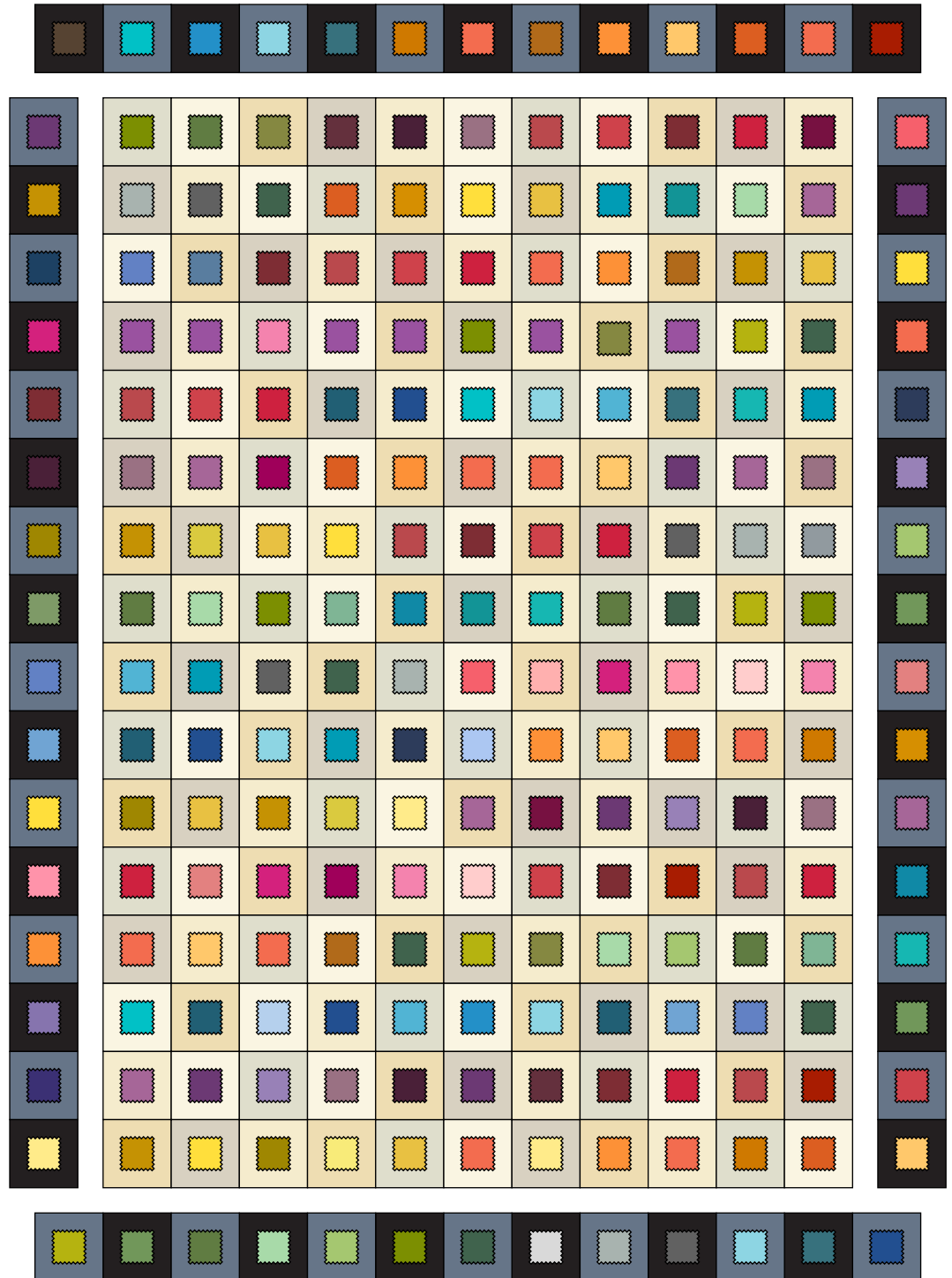
Century Squares Quilt



3. Refer to the Quilt Diagram for the following steps. Once you have stitched all 234 blocks, arrange 11 light blocks in each of 16 rows, being sure that the prints are scattered so no print touches itself. Once you are satisfied with the arrangement, join the blocks in rows, and then join the rows.
4. Alternately join 8 black and 8 graphite blocks to make a side border. Sew to the side of the quilt. Repeat for the opposite side. Join 6 black blocks and 7 graphite blocks to make the top border. Sew to the quilt. Join 7 black blocks and 6 graphite blocks for the bottom border. Sew to the quilt.

Finishing the Quilt

5. Layer the quilt with batting and backing and baste. Quilt in the ditch around blocks. Bind to finish the quilt.



Quilt Diagram

Century Solids

ANDOVER FABRICS



100
years

Fabrics used in quilt pattern are shown in black. Fabrics shown are 100% of actual size.

| | | | | | | | | | |
|----------------|---------------|------------------------|-------------------|-------------------|------------------|------------------|---------------------|-----------------|------------------|
| | | | | | | | | | |
| CS-10 Almond | CS-10 Aqua | CS-10 Aquarium | CS-10 Aubergine | CS-10 Bahama | CS-10 BarnRose | CS-10 Black | CS-10 Bluebell | CS-10 Bordeaux | CS-10 Brass |
| | | | | | | | | | |
| CS-10 Bubble | CS-10 Butter | CS-10 Butternut Squash | CS-10 CafeAuLait | CS-10 Caribbean | CS-10 Carrot | CS-10 Chambray | CS-10 Champagne | CS-10 Chocolate | CS-10 Cinnamon |
| | | | | | | | | | |
| CS-10 Clay | CS-10 Cloud | CS-10 Cocoa | CS-10 Coffee Bean | CS-10 CoralSunset | CS-10 Corn silk | CS-10 Cottonball | CS-10 Cream | CS-10 Dawn | CS-10 Denim |
| | | | | | | | | | |
| CS-10 Earth | CS-10 Emerald | CS-10 Faded | CS-10 Flax | CS-10 Ginger | CS-10 GirlyGirl | CS-10 Goldenrod | CS-10 Graphite | CS-10 Guacamole | CS-10 GuavaPunch |
| | | | | | | | | | |
| CS-10 Gunmetal | CS-10 Hunter | CS-10 Icing | CS-10 Isle | CS-10 Ivory | CS-10 Jade | CS-10 Jalapeno | CS-10 Jam | CS-10 Lagoon | CS-10 Leaf |
| | | | | | | | | | |
| CS-10 Lilac | CS-10 Mango | CS-10 Margarita | CS-10 Moonlight | CS-10 Mulberry | CS-10 Navy | CS-10 Oatmeal | CS-10 Orchid | CS-10 Oyster | CS-10 Papaya |
| | | | | | | | | | |
| CS-10 Paprika | CS-10 Passion | CS-10 Peach | CS-10 Peacock | CS-10 Pear | CS-10 Periwinkle | CS-10 Pickle | CS-10 Pink Lemonade | CS-10 Pistachio | CS-10 Plum |
| | | | | | | | | | |
| CS-10 Pool | CS-10 Powder | CS-10 Pressed Flower | CS-10 Raspberry | CS-10 Red | CS-10 Redwood | CS-10 Saffron | CS-10 Sage | CS-10 Sailing | CS-10 Sapphire |
| | | | | | | | | | |
| CS-10 Sky | CS-10 Slipper | CS-10 Smoke | CS-10 Snow | CS-10 Spice | CS-10 Spring | CS-10 Storm | CS-10 Strawberry | CS-10 Sugar | CS-10 Sunshine |
| | | | | | | | | | |
| CS-10 Sulfur | CS-10 Teal | CS-10 Terracotta | CS-10 Truffle | CS-10 Turquoise | CS-10 Uniform | CS-10 Water | CS-10 Whisper | CS-10 Wine | CS-10 Wisteria |

andover • makower.uk

Free Pattern Download Available

1384 Broadway New York, NY 10018

Tel. (800) 223-5678 • andoverfabrics.com